

**NEVER OUT CATALOG
WASHROOM ACCESSORIES**
美国 ASI 公共卫浴五金亚洲常用款





Conspicuously Minimal, Truly Recessed

ASI独特的卫生间配件新系列旨在融入其中,脱颖而出。不同以往的嵌入式设计,完美的与墙面在同一水平面上,没有任何凸出。高端门铰链,用于实现这种精确的共面配合。哑光黑色或白色的菲诺丽门,安静而轻松地关上,增添一种优雅的气氛。所有的铰链和内部锁紧系统都是隐藏的。这种不经意的优雅增加了视觉享受。



Also available in white

6462-XX PAPER TOWEL DISPENSER AND WASTE RECEPTACLE

Dispenses 600 C-fold, 800 multi-fold, or 1,100 standard single-fold towels (with provided adapter). 9 gal. (34 L) stainless steel waste receptacle. Rolled edged finger hole allows for easy servicing and removal.

Unit Size:
17³/₄" x 54" x 6¹/₂" (438 x 1372 x 165 mm)

6462-00 White Front
6462-41 Matte Black Front



Also available in white

6467-XX PAPER TOWEL DISPENSER AND WASTE RECEPTACLE

Dispenses 600 C-fold or 800 multi-fold paper towels. 4.24 gal. (16 L) stainless steel waste receptacle.

Unit Size:
13" x 55" x 4³/₄" (330 x 1397 x 121 mm)

6467-00 White Front
6467-41 Matte Black Front



Also available in white

6457-XX PAPER TOWEL DISPENSER

Well-suited for the smaller washroom with less space and traffic, this unit dispenses 350 C-fold or 475 multi-fold paper towels.

Unit Size:
12³/₄" x 17¹/₄" x 4¹/₂" (324 x 438 x 115 mm)

6457-00 White Front
6457-41 Matte Black Front



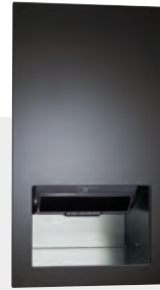
Also available
in white

6474-XX WASTE RECEPTACLE

Stainless steel waste receptacle holds 12 gal. (45.4 L) of washroom waste materials.

Unit Size:
17¹/₄" x 40" x 6³/₄" (438 x 1016 x 171 mm)

- 6474-00** White Front
- 6474-41** Matte Black Front



Also available
in white

645210A/AC-XX AUTOMATIC ROLL PAPER TOWEL DISPENSER

Proximity sensing no-touch unit dispenses an owner-adjustable length per cycle from 8" (203 mm) wide, 800 ft. (244 m) long rolls. Fabricated of 20 gauge stainless steel with satin finish.

Unit Size:
16¹/₁₆" x 29" x 9" (408 x 711 x 229 mm)

- 645210A/AC-00** White Front
- 645210A/AC-41** Matte Black Front



Also available
in white

64696A/AC-XX AUTOMATIC ROLL PAPER TOWEL DISPENSER AND WASTE RECEPTACLE

Proximity sensing no-touch unit dispenses a pre-set length per cycle from 8" or 9" (203 or 229 mm) wide, 800 ft. (244 m) long rolls. 9.9 gal. (37.3 L) stainless steel waste receptacle.

Unit Size:
16¹/₁₆" x 41¹/₄" x 10¹/₄" (408 x 1048 x 261 mm)

- 64696A/AC-00** White Front
- 64696A/AC-41** Matte Black Front



Also available
in white

64623-XX PAPER TOWEL DISPENSER AND WASTE RECEPTACLE

Dispenses 350 C-fold or 475 multi-fold paper towels. 2.2 gal. (8.4 L) stainless steel waste receptacle.

Unit Size:
14¹/₄" x 28" x 4³/₄" (362 x 711 x 121 mm)

- 64623-00** White Front
- 64623-41** Matte Black Front



Also available
in white

64672-XX 3-IN-1 PAPER TOWEL DISPENSER, HIGH SPEED HAND DRYER AND WASTE RECEPTACLE

The 3-in-1 features a <15 second automatic hand dryer, dispenses 400 standard C-fold or 500 standard multi-fold paper towels with a waste capacity of 6.8 gal. (26 L). Dryer has 5-year warranty. 110-120V. Optional voltages available.

Unit Size:
15³/₈" x 55³/₈" x 7¹/₂" (391 x 1407 x 191 mm)

- 64672-00** White Front
- 64672-41** Matte Black Front



20200 TRI-Umph™ 高速干手机

干手时间：小于12秒

拉丝表面外观:ABS外壳含有抗菌银离子镀层处理,符合人体工学,不需要弯腰或屈膝。手上的水珠会被高速气流推向背部的高科技陶板,使水珠连续不断地被吸收挥发。空气中超过99%的细菌被可拆卸的过滤系统清除,超级卫生。5年保修期。

Overall Size : 322 x 588 x 196 MM



ELECTRICAL SPECIFICATIONS:

Electrical Supply: AC, 220-240V 50/60Hz, 1600 Watt, 5-7A
 Motor: 700 Watt, Brush Type, Dual Ball Bearings
 RPM: 14,000 – 18,000 (adjustable)
 Element: 400 – 900 Watt (adjustable)
 Air Speed: 270 – 342 km/hr (adjustable)
 Weight: 10.8kg (Shipping 12.8kg)
 Protection Category: IPX1



0196 TURBO-PRO™ 高速干手机

干手时间：小于12秒

快速干手小于12秒,性能强大而安静,60秒自动关机。

Overall Size : 205 x 287 x 180 MM



ELECTRICAL SPECIFICATIONS:

Motor: 1 HP, 7-18 krpm, adjustable, brush type, dual ball bearings
 0197-2: 240 VAC, 50/60 Hz, 1.6 kW
 Air Output: 68 CFM max – Temp: 140° F (60° C)
 Output Air Speed: 156 mph (229 ft/s) [70 m/s {251 km/h}] –
 224 mph (329 ft/s) [100 m/s {361 km/h}]
 Heater: 400 – 900 Watts
 Current: 7.3 Amps @ 240 VAC



0196 TURBO-PRO™ 高速干手机

干手时间：小于15秒

优雅超薄,仅101mm兼容ADA规范。内置HEPA过滤器可消除99%的细菌。过滤器可单独更换拆卸,无需断开干手机。同时提供操作灵活性,业主可调温度和风速。5年保修期。

Overall Size : 219 x 345 x 101 MM



ELECTRICAL SPECIFICATIONS:

Different models for operating voltage
 208~240 V (50/60 Hz)
 ON/ OFF Heat Option
 Nichrome Wire
 325 – 500 W
 Motor: .67HP, 16 – 29 KRPM
 Brush type, dual ball bearings



0135 TURBO-TUFF™ 嵌入式高速干手机

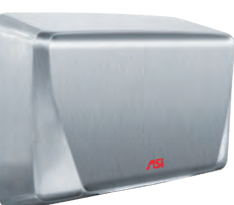
干手时间：小于15秒

全自动感应操作,自动复位恒温器。业主可调风速和温度,开/关加热选项。304拉丝不锈钢外壳,无缝设计是任何卫生间的理想首选—符合ADA规范。

Overall Size : 313 x 386 x 98 MM
 Wall Opening : 320 x 400 x 103 MM

ELECTRICAL SPECIFICATIONS:

Electrical Supply: AC, 220-240V 50/60Hz, 1000 Watt, 3-4A
 Motor: 500 Watt, Brush Type, Dual Ball Bearings
 RPM: 22,000 – 29,000 (adjustable)
 Element: 275-500 Watt (adjustable)
 Air Speed: 199-296 km/hr (adjustable)
 Protection Category: IPX1



0199 TURBO-ADA™ 高速干手机

干手时间：小于15秒

快速干手小于15秒,业主可调风速和温度,开/关加热选项。

Wall Opening : 270x 215 x 102 MM



ELECTRICAL SPECIFICATIONS:

Motor: 0.67 HP 16-29 KRPM – Adjustable brush type dual ball bearings
 Voltage: 0199-2: 208-240 VAC, 50/60 Hz, 1.0 kW max
 Heater: 325 – 450 Watts
 Current: 10.4 Amps @ 110 VAC





0185 PROFILE™ 全自动干手机

干手时间：小于25秒

通用电压:快速干手,自动调整电压100至240伏。
现代设计,经久耐用。

Overall Size : 367 x 275 x 100 MM



ELECTRICAL SPECIFICATIONS:

Motor: 1/4 HP – 7500 RPM – Brush Type
Voltage: 100-240 – 50/60 Hz (2.02 kW) – (2.2 kW)
Air Output: 186 CFM max (314.5 m³/h) –
Temp: 149° F (65°) @ 77° F (25°) ambient room temp
Heater: 1857 Watts
Current: 18.3 Amps @ 240 VAC



HDAPSSS APPLAUSE 全自动干手机

干手时间：小于25秒

这种流线型设计的干手机,时尚轻巧,仅4.6KG,
非常适合需要低噪音的场所。坚固的钢制外壳,
配有防盗螺丝,表面拉丝不锈钢处理,易于清洁。

Overall Size : 250 x 361 x 146 MM



ELECTRICAL SPECIFICATIONS:

Electrical Supply: AC, 220-240V, 50/60Hz, 1000 Watt, 4.A
Motor: 100 Watt, Dual Ball Bearings
RPM: 2,800
Element: 900 Watt
Air Speed: 43.2 km/hr
Protection Category: IPX1



0462-ADT PAPER TOWEL DISPENSER AND WASTE RECEPTACLE

Dispenses 350 C-fold or 475 multi-fold paper towels. 2 gal. (7.6 L) waste receptacle.

Overall Size: 356 X 711 X 102mm

Wall Opening: 305X 660 X 96mm

Material: S.S Finish: Satin

0462-ADT 二合一擦手纸箱和废物收集箱

箱体可容纳 350 张 C-fold 或 475 多层纸,废物收集箱容量: 7.6L

外型尺寸: 356 X 711 X 102mm

开墙尺寸: 305 X 660 X 96mm

材质: 304 不锈钢 表面处理: Satin#4



204623 ROVAL™ PAPER TOWEL DISPENSER AND WASTE RECEPTACLE

Dispenses 350 C-fold or 475 multi-fold paper towels 2 gal.(11.2L) waste receptacle.

Overall Size: 325 x 710 x 165mm

Wall Opening: 286 x 672 x 100 mm

Material: S.S Finish: Satin

204623 ROVAL™二合一擦手纸箱和废物收集箱

箱体可容纳 350 张 C-fold 或 475 多层纸,废物收集箱容量: 11.2L

外型尺寸: 325 x 710 x 165mm

开墙尺寸: 286 x 672 x 100 mm

材质: 304 不锈钢 表面处理: Satin#4



6467T PAPER TOWEL DISPENSER AND WASTE RECEPTACLE

Dispenses 600 C-fold or 800 multi-fold paper towels.12L stainless steel waste receptacle

Overall Size: 330 X 1397 X 105mm

Wall Opening: 290 X 1365 X 93mm

Material: S.S Finish: Satin

6467T 二合一擦手纸箱和废物收集箱

箱体可容纳600张C-fold或800张多层纸,废物收集箱容量: 12L

外型尺寸: 330 X 1397 X 105mm

开墙尺寸: 290 X 1365 X 93mm

材质: 304 不锈钢 表面处理: Satin#4





0467T PAPER TOWEL DISPENSER AND WASTE RECEPTACLE

Dispenses 600 C-fold, 800 multi-fold or 1100 single-fold paper towels. (11 L) stainless steel waste receptacle.
 Overall Size: 360 X 1400 X 105mm
 Wall Opening: 340 X 1355 X 93mm
 Material: S.S Finish: Satin

0467T 二合一擦手纸箱和废物收集箱

箱体可容纳 600 张 C-fold 纸, 800 张多层纸或 1100 张单层纸, 废物收集箱的容量为 11L
 外型尺寸: 360 X 1400 X 105mm
 开墙尺寸: 340 X 1355 X 93mm
 材质: 304 不锈钢 表面处理: Satin#4



0469T PAPER TOWEL DISPENSER AND WASTE RECEPTACLE

Dispenses 600 C-fold or 800 multi-fold paper towels. 12 gal. (46 L) stainless steel waste receptacle.
 Overall Size: 438 X 1422 X 222mm
 Wall Opening: 387 X 1372 X 108 mm
 Material: S.S Finish: Satin

0469T 二合一擦手纸箱和废物收集箱

箱体可容纳 600 张 C-fold 纸、800 张多层纸, 废物收集箱的容量为 46L
 外型尺寸: 438 X 1422 X 222mm
 开墙尺寸: 387 X 1372 X 108mm
 材质: 304 不锈钢 表面处理: Satin#4



204692A-6 ROVAL™ SEMI-RECESSED AUTOMATIC ROLL PAPER TOWEL DISPENSER & WASTE RECEPTACLE

Fabricated of 18 gauge type 304 stainless steel. 17.8 gal. (67.2 L) removable waste receptacle. Towel length is determined by owner by setting length, delay and paper saver switches.
 Overall Size: 447 x 1430 x 297 mm
 Wall Opening: 402 x 1389 x 102 mm

204692A-6 ROVAL™ 半嵌入式全自动擦手纸箱和废物收集箱

全自动感应出纸, 预设出纸长度和延时出纸。可移动废物收集箱的容量为 67.2L
 外型尺寸: 447 X 1430 X 297mm
 开墙尺寸: 402 x 1389 x 102 mm
 材质: 304 不锈钢 表面处理: Satin#4



20469 RECESSED PAPER TOWEL DISPENSER AND WASTE RECEPTACLE

Dispenses 600 C-fold or 800 multi-fold paper towels. 14.8 gal. (56 L) removable waste receptacle.
 Door made of 18 gauge type 304 stainless steel with a heavy-duty piano hinge.
 20469-9 (Not shown) Same as 20469 but with collar for surface mounting.
 Wall Opening: (397 x 1381 x 102 mm)

20469 二合一擦手纸箱和废物收集箱

箱体可容纳 600 张 C-fold 纸、800 张多层纸, 废物收集箱的容量为 56L
 开墙尺寸: 397 X 1381 X 102mm
 材质: 304 不锈钢 表面处理: Satin#4



64672 THREE-IN-ONE UNIT RECESSED COMBINATION PAPER TOWEL DISPENSER AUTOMATIC HAND DRYER AND WASTE RECEPTACLE

Three-in-one unit combines towel dispenser, automatic hand dryer and a (4) gallon (15 L) stainless steel waste receptacle in one unit.
 Overall Size: 391 X 1407X 191mm
 Wall Opening: 358 X 1381 X 184mm
 Material: S.S Finish: Satin

64672 三合一组合机

三合一组合机由擦手纸箱、全自动干手机及 26L 容量的废物收集箱组成
 外型尺寸: 391 X 1407 X 191mm
 开墙尺寸: 358 X 1381 X 184mm
 材质: 304 不锈钢 表面处理: Satin#4





64675T THREE-IN-ONE UNIT RECESSED COMBINATION PAPER TOWEL DISPENSER AUTOMATIC HAND DRYER AND WASTE RECEPTACLE

Three-in one unit combines towel dispenser, automatic hand dryer and a 25.3L stainless steel waste receptacle in one unit
Overall Size: 372 X 1664 X 166mm
Wall Opening: 320 X 1615 X 152mm
Material: S.S Finish: Satin

64675T 三合一组合机

三合一组合机由擦手纸箱、全自动干手机及 25.3L 容量的废物收集箱组成
外型尺寸: 372 X 1664 X 166mm
开墙尺寸: 320 X 1615 X 152mm
材质: 304 不锈钢 表面处理: Satin#4



0210T PAPER TOWEL DISPENSER

Dispenses 400 C-fold or 525 multi-fold paper towels. Fabricated of 22 gauge stainless steel with #4 satin finishes. Fitted with tumbler lock and heavy duty stainless steel piano hinge
Overall Size: 285 X 370 X 105mm
Material: S.S Finish: Satin

0210T 外挂式擦手纸箱

箱体可容纳 400 张 C-fold 擦手纸、525 张多层擦手纸。使用 22gauge 304 不锈钢
箱体上方有锁可固定，使用重负荷琴键式铰链。
外型尺寸: 285 X 370 X 105mm
材质: 304 不锈钢 表面处理: Satin#4



6457T PAPER TOWEL DISPENSER

For the smaller washroom with less space and traffic. Dispenses 350 C-fold or 475 multi-fold paper towels.
Overall Size: 330 X 438 X 108mm
Wall Opening: 280 X 400 X 102mm
Material: S.S Finish: Satin

6457T 嵌入式擦手纸箱

箱体容量较小，可供在小型卫生间或人流量少的场所使用
提供 350 张 C-fold 擦手纸或 475 张多层擦手纸。
外型尺寸: 330 X 438 X 108mm
开墙尺寸: 280 X 400 X 102mm
材质: 304 不锈钢 表面处理: Satin#4



20210 ROVAL™ PAPER TOWEL DISPENSER

Dispenses 400 C-fold or 525 multi-fold paper towels without adjustment or adapters. Fabricated of 22 gauge stainless steel with satin finish. Fitted with tumbler lock and heavy duty stainless steel piano hinge.
Overall Size: 275 X 342 X 119mm
Material: S.S Finish: Satin

20210 ROVAL™系列外挂式擦手纸箱

箱体可容纳 400 张 C-fold 擦手纸或 525 张多层擦手纸，使用 22gauge 304 不锈钢，
箱体上方有锁可固定，使用重负荷琴键式铰链
外型尺寸: 275 X 342 X 119mm
材质: 304 不锈钢 表面处理: Satin#4

045210A AUTOMATIC ROLL PAPER TOWEL DISPENSER, BATTERY OPERATED

Proximity sensing no-touch unit dispenses a pre-set length per cycle from 8" or 9" wide standard towel roll up to 800 ft. (244m) long and has stub roll capability for continuous dispensing.
Overall Size: 438 X 711 X 254mm
Wall Opening: 400 X 673 X 260mm
Material: S.S Finish: Satin

045210A 嵌入式全自动擦手纸箱

全自动感应出纸，擦手纸箱可容纳宽度为 205mm 或 300mm，长为 244m 的大卷纸，
并具有连续出纸能力。
外型尺寸: 438 X 711 X 254mm
开墙尺寸: 400 X 673 X 260mm
材质: 304 不锈钢 表面处理: Satin#4





BTM 镜后系统

0368T PAPER TOWEL DISPENSER

Fabricated of 22 gauge stainless steel with # 4satin finish.
Two installation methods
(surface mounting or behind mirror) .
Overall Size: 292 X 450 X 102mm
Material: S.S Finish: Satin



0368T 镜后擦手纸箱

擦手纸箱使用 22gauge 304 不锈钢，外挂式或用于镜后两种安装方式可供选择
外型尺寸：292 X 450 X 102mm
材质：304 不锈钢 表面处理：Satin#4

镜后全自动感应给皂机

BEHIND MIRROR SDB/BEHIND MIRROR SDE

这是一款镜后安装的全自动感应给皂机，使用红外感应工作原理，可以使用交直流二种供电方式，给皂机采用了重磅铜材质和多层防腐镀铬表面处理。皂机系统包含静音蠕动供液泵，1 升的 ABS 塑料皂液罐和安装托架。可以使用通用洗手液



0332 LAVATORY MOUNTED ALL PURPOSE SOAP DISPENSER

Corrosion-resistant valve dispenses viscous lotion soaps and synthetic detergents.
Fills from top for ease of maintenance. Free turning spout is vandal resistant.
Spout and stem are stainless steel with bright finish. Escutcheon is chrome-plated brass.
Adjustable threaded shank allows for installation in counter tops up to 3 1/2" (90 mm) thick through 7/8" (22 mm) diameter hole.
Capacity: 34 oz. (1.0 L). Spout Length 4" (102 mm).

Model	Capacity	Spout Length
0332	34 oz. (1.0 L)	4" (102 mm)
0332-C	20 oz. (0.6 L)	4" (102 mm)
0332-CD	20 oz. (0.6 L)	6" (152 mm)
0332-D	34 oz. (1.0 L)	6" (152 mm)

0332 台上型给皂机

0332 给皂机可从顶部补充皂液，便于维护和使用，拥有防腐蚀可自由旋转皂液管，有 102mm 和 152mm 两种出皂管长度可供选择皂液管和杆件由镜面不锈钢制成，压盖由铜镀铬制成，可调节的长度为 90mm 的螺纹柄可安装于台面，开孔的直径为 22mm

皂液桶容量：0.6L 或 1.0L



0345 HORIZONTAL SOAP DISPENSER

Stainless steel, #4 satin finish. All-purpose soap valve and unbreakable refill window.
Concealed fastening and hinged filler-top. Capacity: 40 fluid ounces (1.2 L).
Overall size: 8 1/8" x 4 3/4" x 4" (205 x 120 x 100 mm) projection.

0347 VERTICAL SOAP DISPENSER

Capacity: 40 fluid ounces. (1.2 L)
Overall size: 4 3/4" x 8 1/8" x 5 1/4"(100 x 205 x 135 mm) projection.

0345 外挂式给皂机

304 拉丝不锈钢材质，拥有可视孔可清楚看到皂液的使用情况以便清洁人员更换
外型尺寸：205 X 120 X 100mm 容量：1.2L

0347 外挂式给皂机

外型尺寸：100 X 205 X 135mm 容量：1.2L



9343 SURFACE MOUNTED SOAP DISPENSER

All-purpose soap valve dispenses liquid, lotion and detergent-type soap.
Unbreakable refill window, concealed fastening and hinged filler-top for vandal resistance. Capacity: 48 fluid ounces (1.4 L).
Overall size: 185 X 163 X 135mm

9343 外挂式给皂机

通用型的给皂机可以使用液体皂液，乳液和清洁剂及其他形式的皂液，拥有坚固的可视窗口，暗藏的固定件顶部拥有防粗暴使用的加液口

容量：1.4L
外型尺寸：185 X 163 X 135mm





0326 RECESSED HORIZONTAL SOAP DISPENSER

Stainless steel with satin finish, all purpose soap valve, 52 fluid ounce (1.5 L) capacity, unbreakable refill window.

0326 嵌入式给皂机

拉丝不锈钢表面处理, 多功能皂液阀, 拥有坚固的可视窗口。容量: 1.5L



0361 AUTOMATIC SOAP DISPENSER

White, high impact plastic, proximity sensor, battery operated. Tamper resistant soap level viewing window, swing open body with special lock and key. Capacity: 28 fluid ounces (800 ml)

0361 全自动外挂式给皂机

白色, 高强度塑料材质, 全自动感应, 电池供电
透明可视窗口观察皂液使用量, 可旋转的外壳带有特殊的锁和钥匙
外型尺寸: 92 X 262 X 111mm
容量: 0.8L



0362 AUTOMATIC SOAP DISPENSER

Similar to 0360 except suitable for dispensing higher viscosity soaps. Capacity: 27 fluid ounces (800 ml) when using disposable soap cartridge (by others) or 30 fluid ounces (900 ml) when using provided refillable soap 4cartridge. Suitable for antimicrobial soaps. Overall size: projection 125x 270 x 108 mm

0362 全自动感应给皂机

外型尺寸: 125X 270 X 108mm
材质: 304 不锈钢抛光表面处理
容量: 0.9L



0393 EZ FILL™ TOP-FILL, MULTI-FEED LIQUID SOAP DISPENSER HEADS

Constructed of chrome plated spout and battery or AC power operated, hands-free sensor housing with a highly polished finish over all surfaces. LED indicates function and battery condition on face front. Soap supply shall be from EZ Fill™ Vanity Mounted Top-Fill Port and Multi-Feed Tank (supplied separately). Viscosity Range (mPa·s or cP): 100 – 3800 pH Range: 5.5 ~ 8.5

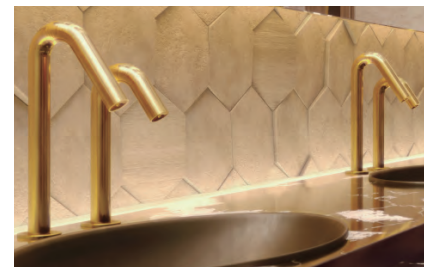
0393 EZ FILL™ 台面添加皂液, 多点位全自动给皂系统

喷口镀铬材质, 全自动感应操作与高度抛光表面。LED 显示皂液量。皂液从台面添加, 可同时供应多个给皂机。
粘度范围 (mPa·s 或 cP): 100 - 3800
pH 范围 :5.5 ~ 8.5
容量: 6L



CSABA 233111B/23311E

这是一款墙出型的全自动感应给皂机, 使用红外感应工作原理, 可以使用交直流二种供电方式, 给皂机采用了重磅铜材质和多层防腐镀铬表面处理. 皂机系统包含静音蠕动供液泵, 1 升的 ABS 塑料皂液罐和安装托架. 可以使用通用洗手液。





ELITE 236110B/236100E

这是一款台上型的全自动感应给皂机，使用红外感应工作原理，可以使用交直流二种供电方式，给皂机采用了重磅铜材质和多层防腐镀铬表面处理。皂机系统包含静音蠕动供液泵，1升的ABS塑料皂液罐和安装托架。可以使用通用洗手液。



EXTREME 237920B/237900E

这是一款台上型的全自动感应给皂机，使用红外感应工作原理，可以使用交直流二种供电方式，给皂机采用了重磅铜材质和多层防腐镀铬表面处理。皂机系统包含静音蠕动供液泵，1升的ABS塑料皂液罐和安装托架。可以使用通用洗手液。



TRENDY 239910B/239900E

这是一款台上型的全自动感应给皂机，使用红外感应工作原理，可以使用交直流二种供电方式，给皂机采用了重磅铜材质和多层防腐镀铬表面处理。皂机系统包含静音蠕动供液泵，1升的ABS塑料皂液罐和安装托架。可以使用通用洗手液。



SWAN 225845B/225840E

这是一款台上型的全自动感应给皂机，使用红外感应工作原理，可以使用交直流二种供电方式，给皂机采用了重磅铜材质和多层防腐镀铬表面处理。皂机系统包含静音蠕动供液泵，1升的ABS塑料皂液罐和安装托架。可以使用通用洗手液。



GREEN 225845B/225840E

这是一款台上型的全自动感应给皂机，使用红外感应工作原理，可以使用交直流二种供电方式，给皂机采用了重磅铜材质和多层防腐镀铬表面处理。皂机系统包含静音蠕动供液泵，1升的ABS塑料皂液罐和安装托架。可以使用通用洗手液。





EXTREME 237891B/237890E

这是一款墙出型的全自动感应给皂机，使用红外感应工作原理，可以使用交直流二种供电方式，给皂机采用了重磅铜材质和多层防腐镀铬表面处理。皂机系统包含静音蠕动供液泵，1升的ABS塑料皂液罐和安装托架。可以使用通用洗手液。



QUADRAT 351910B/351900E

这是一款墙出型的全自动感应给皂机，使用红外感应工作原理，可以使用交直流二种供电方式，给皂机采用了重磅铜材质和多层防腐镀铬表面处理。皂机系统包含静音蠕动供液泵，1升的ABS塑料皂液罐和安装托架。可以使用通用洗手液。



TUBULAR 350919B/350924E

这是一款墙出型的全自动感应给皂机，使用红外感应工作原理，可以使用交直流二种供电方式，给皂机采用了重磅铜材质和多层防腐镀铬表面处理。皂机系统包含静音蠕动供液泵，1升的ABS塑料皂液罐和安装托架。可以使用通用洗手液。



0042 SURFACE MOUNTED JUMBO ROLL TOILET TISSUE DISPENSER

Holds one roll up to 10" (254 mm) diameter of 1 7/8" or 2 1/4" (41 or 57 mm) diameter core. Outer cabinet is type 304 stainless steel with a satin finish. Unit has viewing slot and tumbler lock. Overall size: 10 5/8" x 4 1/2" (270 x 115 mm).

0042 大卷纸箱

304 不锈钢拉丝表面处理，有可视窗口及专用锁配置。

外型尺寸：270 X 115mm



0040 TWIN 9" JUMBO ROLL TOILET TISSUE DISPENSER

Holds two 9" (229 mm) diameter rolls of 2-1/4" or 3" (57 or 76 mm) diameter core. When one roll is depleted, slide panel to expose other roll. Door cabinet and mounting plate fabricated of 18 gauge type 304 stainless steel with a satin finish. Two viewing slots reveal toilet tissue rolls inside. Equipped with tumbler lock.

0040 超霸卫生纸箱

该卫生纸箱可容纳 2 个 229mm 直径（轴芯 57 毫米或 76 毫米）卫生纸卷。当一卷纸用完时，滑动面板使另一卷纸露出来。18 gauge 304 不锈钢拉丝处理，表面光滑。两个可视窗口可以看到使用情况。专用锁配置。

外型尺寸：529 x 289 x 157mm





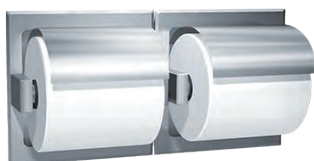
20030 ROVAL™ SURFACE MOUNTED TWIN HIDE-A-ROLL TOILET TISSUE DISPENSER

Holds two rolls up to 5 1/4" (133 mm) diameter (double roll capacity 3600 sheets).
Top roll automatically drops in place when bottom roll is used up.
Type 304 satin finish stainless steel cabinet and mechanism.
Theft-resistant spindles with integral plated steel endpins.

20030 ROVAL™ 系列外挂式双卷筒纸架

能够安装两个直径为 133mm 的卷筒纸，当底部卷纸用完后上方卷纸会自动落下
304 不锈钢拉丝表面处理

外型尺寸：154 X 308 X 165mm



74022-H RECESSED STAINLESS STEEL DOUBLE TOILET TISSUE HOLDER

Recessed dual roll toilet paper holder with hood is fabricated of stainless steel type 304.
Rollers are made of chrome-plated ABS and spring-loaded.
Overall Dimensions: 320 x 160 mm

74022-H 嵌入式双卷纸架

隐藏式双卷卫生纸架 304 型不锈钢表面处理 . 轴是由镀铬 ABS 和弹簧面盖

外型尺寸：320 x 160 mm



395T STAINLESS STEEL SHELF AND DOUBLE TOILET TISSUE HOLDER

Shelf, 18 gauge type 304 stainless steel satin finish with front edge hemmed. Holds two 1800 sheet toilet tissue rolls.
Overall Dimensions: (375X110X130mm).

395T 带置物板双圈纸架

使用 18gauge ,304 不锈钢，表面拉丝处理

外型尺寸：375X110X130mm



0477-SM SURFACE MOUNTED TOILET SEAT COVER DISPENSER

Dispenses 250 single or half-fold seat covers. Overall size: 15 3/4" X 11 1/4" X 2 (400 X 285 X 67 mm).

0477-SM 外挂式座垫纸箱

容量提供 250 张单张或折叠的座垫纸

外型尺寸：400 X 285 X 67 mm



20477-SM ROVAL™ SURFACE MOUNTED SEAT COVER DISPENSER

Dispenses 250 seat covers. Fabricated of 20 gauge type 304 stainless steel with a satin finish.
Overall size: 400 X 280 X 60 mm

20477-SM ROVAL™ 系列外挂式座垫纸箱

容量提供 250 张座垫纸，20 gauge 的 304 不锈钢，拉丝表面处理

外型尺寸：400 X 280 X 60mm



1000 CIRCULAR COUNTER TOP WASTE CHUTE

Provides waste deposit access to receptacle (not furnished) placed directly below chute. Made of heavy gauge stainless steel, rolled flange and exposed surfaces have satin finish. Counter Opening: 5 3/4" (146mm) diameter

1000 台面安装废物收集入口

嵌入台面安装，台下可放置垃圾桶。安全卷边工艺，304 不锈钢，拉丝表面处理
台面开孔直径：146mm



7317T OMARA COVERED WASTE RECEPTACLE

Freestanding covered garbage can. Lid opens by depressing foot pedal. Plastic pail with wire bail included. Satin-finish stainless steel. Capacity: 2 gal (7.6 L)

7317T OMARA 系列独立式翻盖废物收集箱

独立式翻盖垃圾箱，脚踏板即可开启翻盖，塑料内桶，外部不锈钢拉丝表面处理
容量：7.6L
外型尺寸：直径 210mm X 高度 324mm



0458T WASTE RECEPTACLE

Stainless steel waste container locks into cabinet, removable for servicing. Projection Recess: 4" (102mm). Gals.: 12 (46 L)

0458T 嵌入式废物收集箱

304 拉丝不锈钢表面处理，可抽出式垃圾箱便于清洁，废物收集箱容量 46L
外型尺寸：356 X 711 X 204mm
开墙尺寸：305 X 664 X 102mm
凸出墙面：100mm



04733T WASTE RECEPTACLE

Self-closing panel covers the receptacle opening, removable 3gal.(11.4L) stainless steel waste receptacle. Overall Size: 362 X 711 X 115mm
Opening Size: 311 X 660 X 102mm

04733T 嵌入式废物收集箱

拥有自闭式的翻盖，304 不锈钢拉丝表面处理，废物收集箱容量 11.4L
外型尺寸：362 X 711 X 115mm
开墙尺寸：311 X 660 X 102mm



20852 ROVAL™ SURFACE MOUNTED SANITARY WASTE RECEPTACLE

Lid and cabinet are each drawn one piece construction. Lid is secured to the cabinet with a heavy-duty multi-staked concealed piano hinge. Overall Size: 7 1/4" x 10" x 3 1/2" (185 x 253 x 89 mm).

20852 ROVAL™ 系列外挂式女卫收集箱

盖子与箱体均采用整片制造工艺，使用重负荷隐蔽琴键式铰链
外型尺寸：185 X 253 X 89mm



0484-HC DUAL ACCESS SEAT COVER AND TOILET TISSUE DISPENSER

One side mounts flush to partition of barrier-free side to allow for grab bar.
Usable by both sides but serviced from one side. Holds 1000 seat covers and 4 rolls of toilet tissue.
Overall Size: 441 X 778 X 108mm
Partiton Opening: 395 X 735mm

0484-HC 二合一组合机

二合一组合机带有 1000 张座垫纸和 4 卷卫生纸，可双面使用，安装在隔断上
外型尺寸：441 X 778 X 108mm
隔墙开孔尺寸：395 X 735mm
材质：304 不锈钢 表面处理：Satin#4

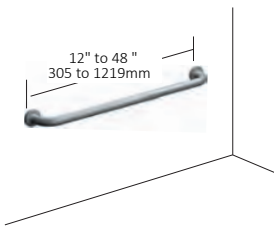


0481-HC DUAL ACCESS SEAT COVER AND TOILET TISSUE DISPENSER WITH SANITARY DISPOSAL

Mounts through partition usable by both sides but serviced from one side. Holds 1000 seat covers and 4 rolls of toilet tissue.
Overall Size: 440 X 780 X 110mm
Partiton Opening: 395X 735mm

0481-HC 三合一组合机

三合一组合机带有 1000 张座垫纸和 4 卷卫生纸及废纸箱，可双面使用，安装在隔断上
外型尺寸：440 X 780 X 110mm
隔墙开孔尺寸：395X 735mm
材质：304 不锈钢 表面处理：Satin#4

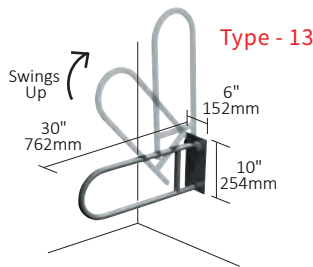


Type - 01 SNAP FLANGE GRAB BARS

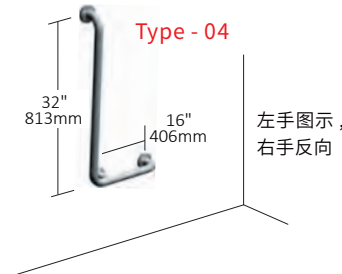
3700 Series—32mm O.D in lengths of 24", 36", and 42"
3800 Series—38mm O.D in lengths of 18", 24", 36", and 42"
Cover snaps over mounting flange dimples to conceal screws

Type - 01 带法兰盖卫浴不锈钢扶手

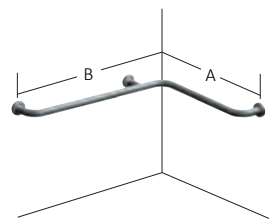
使用法兰盖将安装用螺丝隐藏，多尺寸可供选择
3700 系列 --32mm 管径 尺寸范围：305-1219mm
3800 系列 --38mm 管径 尺寸范围：456-1219mm
ASI 扶手符合 ADA 残障人士使用标准和符合 250 磅以上的美国拉伸测试标准



Type - 13



Type - 04



Type - 50 A = 24" (610 mm)

B = 36" (914 mm)

Type - 56 A = 36" (914 mm)

B = 54" (1372 mm)

Type - 57 A = 42" (1067 mm)

B = 54" (1372 mm)



QSG-089-D
便斗扶手



QSG-089-C
便斗扶手



QSG-089-N
台盆扶手



QSG-089-C
便斗扶手



9012 SURFACE MOUNTED BABY CHANGING STATION

Modern styling and easy-to-clean surface is fabricated of 100% high-density polyethylene. Sturdy child protection has 250 lb. (113.5 kg) load capacity, concave changing surface, and safety strap. Easy opening-closing pneumatic mechanism has oversized hinge and safety stop system. Sealed components and absence of "pinch points" promote safe operation. The built-in dispenser for towels or sanitary liners, hooks for diaper bag and purse, plus multi-lingual instructions add friendliness and convenience. Surface mounted. Only 4" deep when closed. Complies with Handicapped Accessibility codes. Overall size: Open: 570 X 920 X 520 mm Closed: 570 X 920 X 100 mm

9012 婴儿照料台

外观时尚、易于清洁，HDPE 材质，承重力 113.5 公斤，配有安全带
拥有储物空间，人性化设计，给使用者提供方便，外挂式安装，安装后关闭状态凸出墙面 102mm
符合 ADA 残障人士标准

外型尺寸 (开启): 570 X 920 X 520mm (关闭): 570 X 920 X 100mm



9013 RECESSED STAINLESS STEEL BABY CHANGING STATION

ADA-compliant unit features welded stainless steel construction for long and reliable use. Exposed surfaces are satin finish. Easy one-handed operation is assisted by a pull handle and concealed damped gas spring. The changing surface is high-impact resistant plastic with a gloss finish for easy cleaning, and is shaped to cradle a child's body. Its two-part adjustable safety strap and 400lb.(181kg) load capacity assures child protection. Bag hooks built-in bed liner and towel dispensing units and multi-lingual instructions add convenience.

Overall size: 940 X 648 X 451mm Wall opening: 870 X 578 X 95mm

9013 嵌入式不锈钢婴儿照料台

符合 ADA 标准，婴儿台外壳使用 304 不锈钢拉丝表面处理，内胆使用 HDPE 材质，人性化的设计易于单手开启，表面不锈钢易于清洁，承重力：181 公斤，内部配置挂钩及多国语言的说明书供使用者参考

外型尺寸：(开启) 940 X 648 X 451mm 开墙尺寸：870 X 578 X 95mm



9014 HORIZONTAL SURFACE MOUNTED SOLID

This horizontal unit has a pull handle and concealed damped gas spring, assisting in easy operation. Can be fabricated of FDA-approved fungus- and bacteria-resistant solid plastic. Unit is ADA compliant and supports a static load of 300 lbs. Its vinyl-coated, adjustable safety strap assures child protection.

Overall size: Open: 893 x 616 x 559 mm Closed: 893 x 616 x 98 mm

9014 横式婴儿照料台

外观时尚、易于清洁，HDPE 材质，承重力 136 公斤，配有安全带
拥有储物空间，人性化设计，给使用者提供方便，外挂式安装，符合 ADA 残障人士标准

外型尺寸 (开启): 893 x 616 x 559 mm (关闭): 893 x 616 x 98 mm

材质: HDPE



9015 VERTICAL SURFACE MOUNTED SOLID PLASTIC BABY CHANGING STATION

Vertical format. Unit is ADA compliant and shall support a static load of 300 lbs. and be tested in excess of 350 lbs.

Overall size: Open: 616 x 893 x 835 mm Closed: 616 x 893 x 98 mm

9015 竖式婴儿照料台

符合 ADA 残障人士标准，承重力 136 公斤，被测试最重可承重 158 公斤

外型尺寸：(开启) 616 x 893 x 835 mm (关闭) 616 x 893 x 98 mm

材质: HDPE



9018 HORIZONTAL RECESSED MOUNTED STAINLESS STEEL BABY CHANGING STATION

Unit is ADA compliant and shall support a static load of 300 lbs. and be tested in excess of 350 lbs.

Model Options:

9018-9 With stainless steel collar for surface mounting.

Overall size: Open: 995 x 718 x 470 mm Closed: 995 x 718 x 10 mm

Wall Opening: 902 x 622 x 102 mm

9018 横式嵌入式不锈钢婴儿照料台

符合 ADA 标准，婴儿台外壳使用 304 不锈钢拉丝表面处理，内胆使用 HDPE 材质，人性化的设计易于单手开启，表面不锈钢易于清洁，承重力：136 公斤，内部配置挂钩及多国语言的说明书供使用者参考

外型尺寸：(开启) 995 x 718 x 470 mm (关闭) 995 x 718 x 10 mm

开墙尺寸：902 x 622 x 102 mm





9017 VERTICAL RECESSED MOUNTED STAINLESS STEEL BABY CHANGING STATION

This vertical station has a door facing and collar made from 18 gauge 304 stainless steel. Can be fabricated of FDA-approved fungus- and bacteria-resistant solid plastic. ADA compliant and shall support a static load of 300 lbs.

Model Options:

9017-9 With stainless steel collar for surface mounting.

Overall size: Open: 718 x 995 x 746 mm Closed: 718 x 995 x 10 mm

Wall Opening: 622 x 902 x 102 mm

9017 竖式嵌入式不锈钢婴儿照料台

符合 ADA 标准，婴儿台外壳使用 304 不锈钢拉丝表面处理，内胆使用 HDPE 材质，人性化的设计易于单手开启，表面不锈钢易于清洁，承重力：136 公斤，内部配置挂钩及多国语言的说明书供使用者参考

外型尺寸：（开启）718 x 995 x 746 mm（关闭）718 x 995 x 10 mm

开墙尺寸：622 x 902 x 102 mm



9020 CHILD PROTECTION SEAT

Overall size: Open: (318 x 552x 283mm)

Closed: (318 x 552 x 140 mm)

9020 婴儿保护座椅

外型尺寸：（开启）318 x 552x 283mm（关闭）318 x 552 x 140 mm

材质：HDPE 承重：25 公斤



7340 SINGLE ROBE HOOK

Hook extends 1 5/8" (40 mm) from wall.

7345 DOUBLE ROBE HOOK

4" (100 mm) wide stainless steel bar forms hook at each end. Unit extends 1 5/8" (40 mm) from wall.

7340 衣帽单钩

凸出墙面距离：40mm

7345 衣帽双钩

衣帽钩宽 100mm，每端各一个挂钩 凸出墙面距离：40mm



8215 MOP AND BROOM RACKS

Formed channel fabricated of 20 gauge, type 304 stainless steel satin finish.

Projects 3 1/2" (90 mm) from wall. Rubber cam holders ribbed for grasping.

3 holders, 26" (660 mm) long.

8215 拖把架

使用 20gauge 304 不锈钢拉丝表面处理，凸出墙面距离：90mm

8215-3 3 holders, 26" 长度：660mm 可放置三个拖把

8215-4 4 holders, 36" 长度：915mm 可放置四个拖把

8215-5 5 holders, 46" 长度：1170mm 可放置五个拖把



0714 COAT AND BUMPER HOOK

Chrome-plated 3" (75 mm) projection. Rubber bumper protects wall surface.

0714 衣帽钩附带门撞功能

材质：压铸合金镀铬制造 凸出墙面距离：75mm



0661 VELARE™ BTM SYSTEM

Designed to provide easy visibility for wheelchair patients or return to upright position. Angle frame fabricated of 18 gauge stainless steel with corners welded and ground smooth. Tilts a full 6" (152 mm) with bottom mounted on full width stainless steel piano hinge.

0661 VELARE™ 镜后系统

这个精致的镜后系统，包含了墙上安装的安装的不锈钢箱体，里面隐藏了一个全自动给皂机以及一个可选择的擦手纸盒或高速干手机。（带 HEPA 过滤系统的干手机）。

外形尺寸：600 x 900 x 192 mm

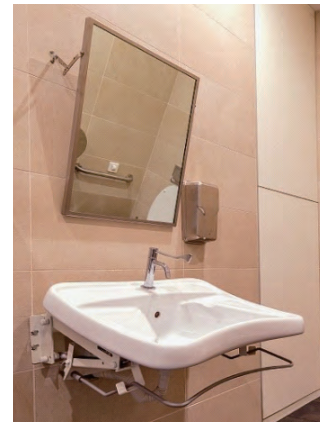


0600T ADJUSTABLE TILT MIRROR

Designed to provide easy visibility for wheelchair patients or return to upright position. Angle frame fabricated of 18 gauge stainless steel with corners welded and ground smooth. Tilts a full 6" (152 mm) with bottom mounted on full width stainless steel piano hinge.

0600T 可调节镜子

该产品的设计为坐轮椅的残障人士提供方便，镜子可调节角度或返回初始位置。镜子外框使用 18gauge304 锈钢表面处理，整排式的琴键式铰链制造工艺。



ANGLE FRAME MIRROR

heliarc welded, ground and polished smooth to a uniform satin finish. Mirror is installed on concealed hanging bracket that locks onto top and bottom of frame by tamper-proof set screws. Back plate is one piece, attached to frame with theft resistant locking device.

ANGLE 系列镜子

焊接、打磨抛光处理，镜子安装在隐藏式的挂架上，使用防盗螺丝将顶部和底部固定背板为整片制造，具有防盗装置。

0600-1830- 452 X 762 mm

0600-1836- 452 X 914 mm

0600-2436- 610 X 914 mm

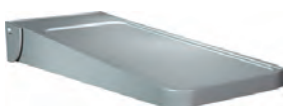


0751 HEAVY DUTY ROBE HOOK

Concealed mounting satin chrome-plated brass, 3 1/4" (80 mm) projection.

0751 重负荷衣帽钩

材质：铜镀铬 凸出墙面距离：80mm 承重：136 公斤



0698 FOLDING UTILITY SHELF FOR TOILET COMPARTMENTS

Fabricated of 18 gauge type 304 satin finish stainless steel with raised rim. Returns to upright position when not in use. Overall size: 14 5/8" x 5 13/16" (370 x 150 mm).

0698 置物板

使用 18gauge304 拉丝不锈钢及包边工艺，不使用时可翻回垂直放置

外型尺寸：370 X 150mm



7311 OMARA TOWEL SHELF WITH TOWEL BAR

Heavy duty unit with 3/4" and 3/8" diameter type 304 stainless steel tubing. Bright finish only. Available 20" Overall height: 6 1/2" (165 mm); projects 8" (200 mm).

7311 OMARA 系列双层毛巾架

采用直径为 3/4" 和 3/8" 304 重负荷不锈钢管，镜面抛光处理，长度为 510mm 和 610mm
外型尺寸：高度 165mm 凸出墙面 200mm



8203 COMPACT FOLDING SEAT

Seat is 5/16" (8 mm) thick, one piece, solid phenolic, ivory colored. Frame, support legs, flanges and bracket are type 304 satin finished stainless steel. Features a self-locking mechanism. Seat measures 18" (460 mm) wide and projects 16" (405 mm) from wall.

8203 可折叠凳

可折叠凳面板使用 8mm 的整片菲诺丽材质，象牙色，支撑脚及框架均为 304 不锈钢拉丝表面处理同时带有自动锁紧安全装置

凳子尺寸：405 X 460mm



8206-L FOLDING SHOWER SEAT

(Left Hand) Meets ADA Accessibility Guidelines and the needs of the physically disabled and elderly. Seat is 1/2" (13 mm) thick, one piece solid phenolic, ivory colored. Frame, support legs, flanges, and bracket are type 304 satin finish stainless steel. Features a reversible self-locking mechanism. Seat measures 33" (840 mm) wide and projects 22 7/8" (580 mm) from wall.

8206-L 可折叠凳

(左侧) 符合 ADA 残障人士标准和老年人使用标准

可折叠凳面板使用 13mm 的整片菲诺丽材质，象牙色，支撑脚及框架均为 304 不锈钢拉丝表面处理

凳子尺寸：840 X 580mm

8206-R (右侧) 也同时可以提供



1204 EXTRA HEAVY-DUTY SHOWER CURTAIN ROD

Flanges 3" (75 mm) diameter, 20 gauge type 304 stainless steel with satin finish. Rod is 1 1/4" (32 mm) diameter, 18 gauge type 304 stainless steel tubing with satin finish.

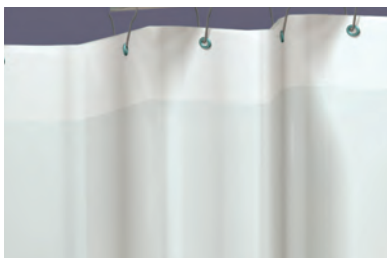
1204-36 - 36" (914 mm)

1204-60 - 60" (1524 mm)

1204 重负荷浴帘杆

法兰盖式使用 75mm 直径底座，20 gauge 304 不锈钢拉丝表面处理

浴帘杆使用直径为 32mm，18gauge 304 不锈钢拉丝表面处理



1200-SHU SHOWER CURTAIN HOOK

Stainless steel hook for rods 1" (25 mm) and 1 1/4" (32 mm) diameter.

1200-V VINYL SHOWER CURTAIN

Flame resistant, anti-bacterial, 8 gauge san suede fabric with grommets. White only.

Height: 72" (1830 mm).

1200-V42 - 42" x 72" (1067 x 1830 mm)

1200-V72 - 72" x 72" (1830 x 1830 mm)

1200-SHU 浴帘钩

在管径为 25mm 或 32mm 浴帘杆上使用

1200-V 尼龙浴帘

防火、抗菌、颜色为白色，尺寸：1200-V42 - 1067 x 1830mm 1200-V72 - 1830 x 1830mm



7314-H SINGLE TOILET PAPER ROLL HOLDER WITH HOOD 单卷带盖卫生纸架



7308 SINGLE ROBE HOOK 单头浴巾钩



7312 DOUBLE ROBE HOOK 双头浴巾钩



7313 SURFACE MOUNTED SOAP DISH WITH GLASS HOLDER 玻璃香皂架



7306 TOWEL RING 毛巾架



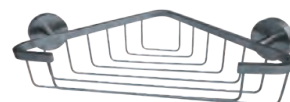
0259-SS FACIAL TISSUE DISPENSER, SATIN FINISH 嵌入式面巾纸盒



1201 SHOWER CURTAIN ROD, CURVED W/ MOUNTING BRACKETS 带座弧形浴帘杆



0712 RETRACTABLE CLOTHES LINE 可伸缩晾衣绳



0722 SOAP BASKET 肥皂篮



THE ASI GROUP

The ASI Group is your single source solution for Washroom Accessories, Toilet Partitions, Lockers and other storage products worldwide.

Partitions — The most complete line available in the industry — stainless steel, solid plastic, powder coated steel, phenolic, color-thru phenolic and plastic laminate partitions. Since 1957, we have offered designers worldwide a myriad of choices to satisfy every need.

Lockers — The best engineered lockers and shelving in the industry, period. A wide range of colors and materials (including steel, solid plastic and phenolic) offer the perfect solution for any storage application.

Our mission is to make our customers successful by providing value that exceeds price and an excellent service experience. We do this by providing superior design, the broadest range of quality products in the industry, and state-of-the-art manufacturing to ensure that we have whatever our customers need, whenever they need it.

With experienced architectural representatives and customer service teams, we are here to help you deliver on projects that range from world-class office buildings, educational facilities, sports venues, and government buildings to hospitals, chain stores, and hospitality / entertainment complexes.

American Specialties, Inc., Global Partitions, Accurate Partitions Corp. and ASI Storage Solutions Inc. are all part of the ASI Group of companies.

美国 ASI 集团为全球客户提供全面的解决方案，产品包含公共卫浴五金，公共卫生间隔断，储物更衣柜及货架系统。

公共卫生间隔断系统拥有目前在工业领域最齐全的产品线，包含不锈钢系列，镀锌钢板系列，HDPE 高分子材质系列，倍耐板系列，同质倍耐板系列和防火板系列。1957 年创立以来，我们为设计师提供多种材质的选择，是设计师心目中的理想首选。

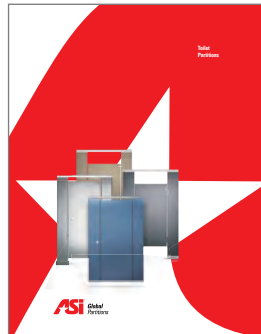
储物更衣柜及货架系统，我们拥有整个行业最佳工业设计的更衣柜和货架系统，拥有最广泛的颜色和材料选择。（包括钢板、HDPE 高分子材质和倍耐板系列）为任何的储存需要提供最完善的解决方案。

我们的使命是通过提供超越产品价格的优质服务使客户满意。我们提供领先的设计理念，整个行业最广泛的产品线和先进的制造工厂以确保我们客户的需要和准时交货。

我们拥有专业的市场代表和客服团队，能够及时的将产品送到世界级的办公楼，机场，学校，运动场馆，政府大楼，医院，连锁商店和购物中心等项目。



americanspecialties.com
for our complete line of
washroom accessories



globalpartitions.com



asistorage.com

ASI Group
Integrated Building Products

441 Saw Mill River Rd., Yonkers, NY 10701
914.476.9000 • americanspecialties.com

美国ASI集团 中国公司
地址：上海市虹口区四平路188上海商贸大厦1608室
电话：021-3652-5261 传真：021-3652-3216
www.asigroup.cn